

# Symantec Enterprise Vault™ for IBM Lotus Domino®

## Data Sheet: Archiving

### Overview

#### *Industry-leading email archiving for IBM Lotus Domino®*

With the recognition that email has become as mission critical as any other IT system, most organizations are evaluating their overall policies and systems for email management. Across many industries and public sector organizations, IT professionals are being called on to address the three most common management concerns regarding email: resource management, retention management, and discovery management.

Given these challenges, tens of thousands of enterprises across the world are implementing email archiving software solutions. These systems typically allow IT organizations to control email storage costs, while giving end users more user-friendly email storage and search capabilities. Archiving software also provides legal departments with a consistent system for retaining and finding email messages across the enterprise.

Symantec Enterprise Vault™ provides a software-based intelligent archiving platform that stores, manages, and enables discovery of data within your IBM Lotus Domino® messaging environment. Because not all data is created equally, Enterprise Vault utilizes intelligent classification and retention technologies to capture, categorize, index, and store target data. These comprehensive capabilities enable IT organizations to enforce policies and protect corporate assets while reducing storage costs and simplifying management. Enterprise Vault also includes specialized applications, such as Symantec Enterprise Vault™ Discovery Accelerator and Symantec Enterprise Vault™ Compliance Accelerator, that mine archived data to support legal discovery, content compliance, knowledge management, and information security initiatives.

### Features and benefits

- Automatic mailbox management frees users from quota frustrations without compromising Lotus Domino performance and reliability.
- Storage optimization eliminates unnecessary storage consumption, increasing stability, and efficiency of user .nsf databases.
- Protection against theft and disaster reduces the risk of exposure of private email archives.
- Secure access controls to protect the privacy of corporate and user information, facilitate faster backup of Lotus Domino, and improve recovery time in a disaster.
- Archiving enables the retrieval of email and other business content to meet legal and regulatory compliance requirements.
- Powerful indexing and easy-to-use search features help users quickly find and retrieve important information.

### *Automatic mailbox management*

With Enterprise Vault, you can give your users mailboxes of virtually unlimited size while controlling the growth of storage resources. Administrator-defined policies automatically archive individual email messages and attachments from Lotus Domino into the Enterprise Vault archive. This enables Lotus Domino to focus on the dynamic handling of newer information, while Enterprise Vault software acts as a long-term repository for older information. Lotus Domino server performance can be dramatically improved and users can enjoy instant access to their email, without the associated cost and management issues.

### Storage optimization

Enterprise Vault can help your organization eliminate the need for .nsf file creation to address stringent mailbox quotas, and this can help you better control storage consumption and ultimately storage costs. By offering email users a virtual, bottomless mailbox using archiving policies based on mailbox quota utilization, attachment size, or actual message age, IT is able to more effectively govern the amount of data in their message store and automatically archive older messages. By eliminating mailbox quotas, you effectively eliminate the need for .nsf files, which will inevitably take up storage space. It also ensures that critical corporate information from the email system is under IT control in a searchable, centralized repository.

### Protection against theft and disaster

In many companies, archiving has quickly moved beyond a Lotus Domino administrator's pilot project for reducing Lotus Domino storage to an integral part of an information lifecycle strategy. This often requires many different types of administrators to manage parts of the archive. Enterprise Vault provides access controls to protect the security and privacy of individual email users while allowing authorized users to search across mailboxes. Enterprise Vault also provides real-time performance metrics, reports, and analytics to help ensure the application and the archive are running as expected.

By setting flexible archiving policies within Enterprise Vault, you can significantly reduce your Lotus Domino message store by as much as 90 percent. Enterprise Vault moves email from the Lotus Domino server to a secure, central repository that is accessible by authorized users. This decreases the amount of Lotus Domino data that must be backed up and potentially recovered in the event of failure or disaster. It also reduces the time required to rebuild and reload the information after a disaster, enabling you to get your systems up faster and your company back in business sooner.

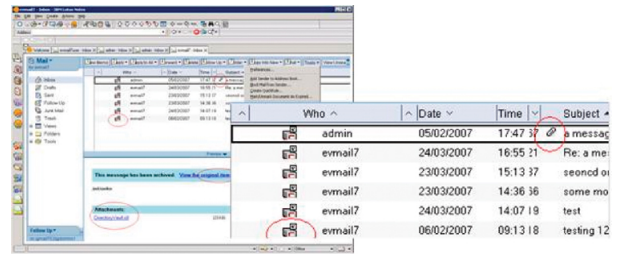


Figure 1. Enterprise Vault for Lotus Domino provides seamless integration for Lotus Notes® users.

### Seamless end user experience

The true power of Enterprise Vault software lies in the way it presents archived content to end users. Indexing of archived email and attachments, combined with seamless integration with Notes®, Lotus Domino® Web Access, and Lotus Domino, allows users to quickly and easily search for and retrieve information. Shortcuts and Web-based search functions keep users instantly in touch with all archived email content on both the mailbox level and the organizational level. Whether a search is performed for large volumes of email or simply to locate a single item, the seamless presentation of archived data is an outstanding feature of Enterprise Vault software.

### .nsf migration

Enterprise Vault software allows organizations to migrate and archive email content from end user created .nsf files into the archive repository.

Centralizing user search and accessibility to this data enables the organization to significantly reduce the amount of data stored in local .nsf files and their replicants. Reducing database size improves performance and eases maintenance of both Notes clients and Lotus Domino servers.

As Enterprise Vault ingests Lotus Domino content, Lotus Domino storage growth will slow, stop, and then likely reverse as the scales tip by removing older content and putting it into a more efficient archive.

### Key benefits:

- Reduce database size and improve performance on Lotus Domino servers and Notes clients.
- Eliminate multiple copies of documents and their attachments to ease backup and maintenance burden due to data accumulation.
- Effective means to efficiently reintroduce legacy data to the environment under IT control.

### Offline access to archived information

Enterprise Vault provides laptop access to archived email even when not connected to the corporate network. Requiring low bandwidth, Enterprise Vault software can be configured to provide users with a local archive stored on their PC hard drive. When a disconnected user tries to access an archived item via a shortcut, this item will be retrieved from the local archive, enabling access to important content wherever the user is located. At the same time, the user's email is still archived to the corporate archive, so it is not vulnerable to loss or damage.

### Archiving for legal and regulatory compliance

Legal and governmental bodies are increasingly requiring organizations to find, monitor, or produce email, files, and messages for regulatory or legal actions. Enterprise Vault provides a centralized archive to be searched for meeting compliance, investigation or legal discovery needs. It virtually eliminates the need for IT staff to scour the organization to find electronically stored information.

Designed to support the U.S. Federal Rules of Civil Procedure and other such rules or laws, Enterprise Vault Discovery Accelerator (see Figure 2) provides powerful search, production, and legal hold capabilities to help ensure that email, files, instant messages, and other business critical content can be produced and used as evidence.

Focused on compliance, Enterprise Vault Compliance Accelerator provides the tools necessary to proactively

search, sample, and review archived content, such as email or instant messages, according to compliance policies. The entire process is tracked, and extensive reporting enables you to demonstrate adherence to corporate and regulatory compliance policies.

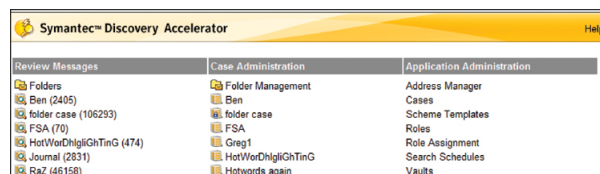


Figure 2. Discovery Accelerator facilitates the search, review and preservation process for electronic discovery of archived content.

### Complete Lotus Domino protection

Organizations that already have Symantec NetBackup™ or Symantec Backup Exec™ can add value with Enterprise Vault. Complementing data protection technologies with archiving enhances traditional backup and recovery—or archiving alone—by reducing the size of data stores of applications such as Microsoft® Exchange, Lotus Domino, or Microsoft SharePoint®, or the storage footprint of file servers. As a result, backup and recovery times shrink because you now are working with less data to protect and recover due to archiving, helping you reduce storage and storage management costs.

More importantly, with Enterprise Vault, you can leverage archived data for greater value through intuitive search and retrieval tools. End users benefit from the ability to retrieve their own files quickly, helping IT groups to spend less time on tactical, administrative requests, such as recovering an email and more time on strategic activities.

Finally, for NetBackup deployments, Enterprise Vault offers integration to enable customers to define automatic, policy-based migration strategies that move archived data from disk managed by Enterprise Vault to tape or other media managed by NetBackup, helping customers leverage their backup infrastructure to manage archived data.

### More Information

#### Visit our website

<http://enterprise.symantec.com>

#### To speak with a Product Specialist in the U.S.

Call toll-free 1 (800) 745 6054

#### To speak with a Product Specialist outside the U.S.

For specific country offices and contact numbers, please visit our website.

#### About Symantec

Symantec is a global leader in providing security, storage and systems management solutions to help consumers and organizations secure and manage their information-driven world. Our software and services protect against more risks at more points, more completely and efficiently, enabling confidence wherever information is used or stored.

#### Symantec World Headquarters

350 Ellis St.

Mountain View, CA 94043 USA

+1 (650) 527 8000

1 (800) 721 3934

[www.symantec.com](http://www.symantec.com)

For further information please contact:

**Arcplace** 

Arcplace AG, Wiesenstrasse 14, CH-8008 Zurich  
T: +41 44 260 80 00 / [www.arcplace.ch](http://www.arcplace.ch) / [info@arcplace.ch](mailto:info@arcplace.ch)

Archiving & Backup Solutions